



3-6th SEPTEMBER, 2010

International Conference in Landscape Ecology

BRNO / PRAGUE, CZECH REPUBLIC

"Landscape structures,
functions and management:
response to global
ecological change"

ORGANISED BY CZ-IALE

FINAL PROGRAMME

ORGANISERS

CZ-IALE



Mendel University in Brno
Faculty of Forestry
and Wood Technology



Charles University in Prague
Faculty of Science



WITH THE SUPPORT OF

Ministry of Environment

Ministry of the Environment
of the Czech Republic

South Moravian Region



CONFERENCE SECRETARIAT



GUARANT International spol. s r.o.
Opletalova 22, 110 00 Prague 1
Czech Republic
Tel: +420 284 001 444
Fax: +420 284 001 448
E-mail: icle2010@guarant.cz
Web: www.iale.cz/icle2010
Conference hotline: +420 606 615 031

CONTENTS

Scientific & Organising Committees	page 04
Welcome address from the Conference organisers	page 05
Auspices	page 06
Conference venue	page 07
Programme at a glance	page 08
Oral presentations	page 09–20
Poster session	page 21–26
Workshops	page 27–28
Field trips	page 29–35
Post-conference excursions	page 36–38
Social events	page 39
Information for speakers	page 40
Registration	page 40
General information	page 41–43



SCIENTIFIC COMMITTEE

Chairman

Prof. Dr. Pavel Kovář, Charles University in Prague, Czech Republic

Members

- Prof. Dr. Paul Opdam, IALE vicepresident, ALTERRA, Wageningen, The Netherlands
- Dr. Sandra S. Luque, IALE vicepresident, Cemagref - Institute for Agricultural and Environmental Engineering Research, France
- Prof. Dr. Bob Bunce, IALE pastpresident, ALTERRA, Wageningen, The Netherlands
- Dr. Rob Jongman, ALTERRA, Wageningen, The Netherlands
- Prof. Dr. Mária Kozová, Comenius University in Bratislava, Slovakia
- Prof. Dr. László Miklós, Technical University in Zvolen, Slovakia
- Prof. Dr. Keitarou Hara, Tokyo University of Information Sciences, Japan
- Prof. Dr. Ülo Mander, University of Tartu, Estonia
- Dr. Neil Mitchell, University of Auckland, New Zealand
- Assoc. Prof. Jerzy Solon, Institute of Geography and Spatial Organization Polish Acad. Sci., Poland
- Dr. Thomas Wrška, University of Vienna, Austria
- Dr. Olaf Bastian, Leibniz-Institute for Regional and Ecological Development, Germany
- Prof. Dr. Almo Farina, University of Urbino, Italy
- Dr. Alexander V. Khoroshev, Moscow Lomonosov State University, Russia
- Prof. Dr. Karel Prach, University of South Bohemia, Czech Republic
- Assoc. Prof. Dr. Petr Maděra, Mendel University in Brno, Czech Republic
- Assoc. Prof. Antonín Buček, Mendel University in Brno, Czech Republic
- Assoc. Prof. Zdeněk Lipský, Charles University in Prague, Czech Republic

ORGANISING COMMITTEE

- Assoc. Prof. Dr. Petr Maděra, Mendel University in Brno, Czech Republic
- Dr. Dušan Romportl, Charles University in Prague, Czech Republic
- Dr. Ivo Machar, Palacký University, Olomouc, Czech Republic
- Dr. Zbyněk Ulčák, Masaryk University, Brno, Czech Republic
- Dr. Jan Skaloš, University of Life Sciences in Prague, Czech Republic
- Dr. Tomáš Chuman, Charles University in Prague, Czech Republic

WELCOME ADDRESS

Dear colleagues, ladies and gentlemen,

We are pleased to welcome you all to the **International Conference in Landscape Ecology**, and to the capital of Moravia, Brno which is the main venue of our meeting. Prague with its surroundings represents the arena of the post-conference excursions.

The Conference is hosted by the **Faculty of Forestry and Wood Technology, Mendel University in Brno** and **Faculty of Science, Charles University in Prague**. The main committee of the CZ-IALE is substantially composed of the people working in both above mentioned universities.

Czech Republic organized the first international conference for IALE members in 1998 in Prague on „Nature and Culture in Landscape Ecology“. It was a part of our „test phase“ preceding the foundation of the Czech regional chapter of IALE in 2000. This action enabled that the Middle-European (CZ-IALE) Conference 2010 is dedicated to 10th anniversary of the CZ-IALE. It is focused on „**Landscape structures, functions and management: response to global ecological change**“.

Territory of the Czech Republic as one of diverse European regions has been exposed to many extreme, climatically and hydrologically significant episodes in its modern history. E.g. impacts of floodings in 1997, 2002, 2006 and this year (several times) were so disruptive that their economical consequences will reach to long-term dimension.

Many changes in the non-conceptual landscape management across the countries seem to be determining the trend of continentalization of the European climate and ecosystems with all the accompanying extreme phenomena.

We believe that our meeting means the opportunity to discuss new connections and interrelationships within our knowledge and it can express some consistent opinion towards our decision sphere.

Well known keynote speakers of international reputation in general and landscape ecology are among you and will introduce the conference subjects. We are sure that all of you will contribute to the success of this event.

With these words we declare the Conference is prepared for its opening in the first days of September 2010.

Prof. Dr. Pavel Kovář
Chairman of the conference

Assoc. Prof. Dr. Petr Maděra
President of CZ-IALE

AUSPICES

Auspices of the Minister of Environment of the Czech Republic



Pavel Drobil
Minister of the Environment of the Czech Republic

Prague 20. August 2010
Ev.no.: 72265 /ENV/10
3934/M/10

Dear Mr. Kovář,

Thank you for providing information on the international conference on landscape ecology "Landscape Structures, Functions and Management: Response to Global Ecological Change", organized by the Czech Society for Landscape Ecology, which is to be held at the venue of the Mendel University of Agriculture and Forestry, in Brno, September 3 – 7, 2010.

I am pleased to announce my decision to provide the patronage of the Ministry of the Environment to your event. I believe this conference will contribute to a fruitful exchange of ideas between experts.

Yours sincerely,

V-2-LA

Mr. Pavel Kovář
CZ-IALE
Karlova Univerzita
128 01 Praha 2

CONFERENCE VENUE

Mendel University in Brno

Zemědělská 1, Brno
Czech Republic

Mendel University in Brno can pride itself on the longest history of agriculture and forestry studies on the Czech lands. It was established in 1919 as the University of Agriculture in Brno and it maintained this name till 1994. Its constitution completed the long term effort to institute an agricultural university in Moravia, which has, from time immemorial, held an important post among the countries with the most developed agricultures in the Central Europe.

Since its establishment, it has undergone a range of structural as well as curricula changes, and provided top quality education to more than 20,000 agricultural engineers, 6,500 forestry engineers and 5,500 engineers of economics so as to be employable in a variety of spheres of the national economy and the economic practice.

The university is divided into four faculties and one institute:

- Faculty of Agronomy
- Faculty of Forestry and Wood Technology
- Faculty of Business and Economics
- Faculty of Horticulture (located in Lednice)
- Institute of Lifelong Learning



The main entrance to the campus is through gate between buildings A and B.

PROGRAMME AT A GLANCE

BRNO / South Moravian Region

FRIDAY, September 3rd, 2010

09:00–12:00	SYMPOSIUM No. 1 – PLENARY SESSION
13:00–16:00	SYMPOSIUM No. 1 – PARALLEL SESSION
13:00–18:00	PARALLEL SYMPOSIUM No. 2
13:00–18:30	PARALLEL SYMPOSIUM No. 3
13:00–17:00	PARALLEL SYMPOSIUM No. 4
14:00–18:00	BRNO BY BUS EXCURSION
17:00–18:30	OPENING OF POSTER SESSION

SATURDAY, September 4th, 2010

08:30–17:30	FIELD TRIP No. 1
08:30–18:30	FIELD TRIP No. 2

SUNDAY, September 5th, 2010

09:00–14:30	PARALLEL SYMPOSIUM NO. 5
09:00–14:30	PARALLEL SYMPOSIUM NO. 6
09:00–14:30	PARALLEL SYMPOSIUM NO. 7
09:00–12:00	PARALLEL SYMPOSIUM NO. 9
13:00–14:00	PARALLEL SYMPOSIUM NO. 8
15:00–17:00	WORKSHOP No. 1
15:00–17:00	WORKSHOP No. 2
19:00–22:00	GALA DINNER

MONDAY, September 6th, 2010

08:30–19:00	FIELD TRIP No. 3
08:30–19:00	FIELD TRIP No. 4

PRAGUE / Central Bohemia Region

TUESDAY, September 7th, 2010

07:30–19:00	POST-EXCURSION No. 1
08:00–17:00	POST-EXCURSION No. 2

*departure point

location

building A, aula, 3 rd floor
building A, aula, 3 rd floor
building Q, Q01, ground floor
building Q, Q02, ground floor
building Q, Q03, ground floor
building A, main entrance*
building Q, foyer, ground floor

departure point

building A, main entrance
building A, main entrance

location

building Q, Q01, ground floor
building Q, Q02, ground floor
building Q, Q03, ground floor
building Q, Q16, first floor
building Q, Q16, first floor
building Q, Q01, ground floor
building Q, Q02, ground floor
building A, main entrance*

departure point

building A, main entrance
building A, main entrance

departure point

building A, main entrance
building A, main entrance

ORAL PRESENTATIONS

FRIDAY, September 3rd, 2010

09:00–12:00 SYMPOSIUM No. 1: PLENARY SESSION

Global climate dynamics: challenge for conceptual work in landscape science
Chairman: Pavel Kovář

09:00–09:30 OPENING SESSION

Pavel Kovář, Chairman of the conference
Ladislav Miko, Director for Nature, DG Environment, European Commission
Rút Bízková, Deputy Minister of the Environment of the Czech Republic
Míchal Hašek, Governor of the South Moravian Region
Jaroslav Hlušek, Chancellor of Mendel University
László Miklós, Chairman of EALE
Petr Maděra, President of CZ-IALE

09:30–12:00 KEYNOTE LECTURES FOR PLENARY SESSION

Chairman: Paul Opdam

09:30–09:50	LANDSCAPE IN EUROPEAN ENVIRONMENTAL POLICY: TRENDS, CHALLENGES AND OPPORTUNITIES (PLO1) <i>Ladislav Miko, Directorate B-Nature, European Commission</i>
09:50–10:10	ADAPTING LANDSCAPES FOR CLIMATE CHANGE: LINKING EUROPEAN POLICY TO LOCAL LEVEL LANDSCAPE DEVELOPMENT (PLO2) <i>Paul Opdam, Alterra, Wageningen University Research Centre, The Netherlands</i>
10:10–10:30	CLIMATE CHANGE IN EUROPE FROM THE IPCC VIEWPOINT (PLO3) <i>Ladislav Metelka, Czech Hydrometeorological Institute, Czech Republic</i>
10:30–10:50	BIOLOGICAL INVASIONS: FROM ORGANISMS TO LANDSCAPES (PLO4) <i>Marcel Rejmánek, University of California, Davis, USA</i>
10:50–11:10	FROM EDUCATIONAL REFUGEES TO HUMAN ENVIRONMENTAL MIGRANTS. THE CONCEPTUALIZATION OF ENVIRONMENTALLY-INDUCED MIGRATION FROM THE PERSPECTIVE OF BEHAVIOURAL GEOGRAPHY (PLO5) <i>Dušan Drbohlav & Robert Stojanov, Charles University in Prague, Faculty of Science, Czech Republic</i>

- 11:10–11:30 ARE THERE GENERAL LAWS OF LANDSCAPE STRUCTURE? SCALING SPATIAL DISTRIBUTIONS, BETA DIVERSITY AND THE SPECIES-AREA RELATIONSHIP (PLO6)
David Storch, Charles University in Prague, Center for Theoretical Study and Faculty of Science, Czech Republic
- 11:30–12:00 **Discussion**
- 12:00–13:00 **Lunch**
- 13:00–16:00 SYMPOSIUM No. 1: PARALLEL SESSION**
Global climate dynamics: challenge for conceptual work in landscape science
Chairman: Antonín Buček
- 13:00–13:15 SYSTEMS DYNAMICS THINKING AND NATURAL RESOURCE MANAGEMENT (1O5)
Garavito Bermúdez D.
- 13:15–13:30 LOCAL COMMUNITIES AND THEIR RISK PERCEPTION OF WATER: AN ATTEMPT FOR DECONSTRUCTION OF GLOBAL TECHNOCRATIC MYTH (1O2)
Lapka M.
- 13:30–13:45 A BASIS FOR ENVISIONING URBAN FUTURES: SPATIAL CORRELATION OF URBAN ECOLOGICAL VALUES WITH USER-PERCEIVED SOCIAL VALUES, RESIDENTIAL INCOME LEVELS, AND PROPERTY RIGHTS/ MANAGEMENT IN STOCKHOLM, SWEDEN (1O7)
Ranara J.
- 13:45–14:00 GLOBAL CLIMATE CHANGE AND PREDICTION OF VEGETATION ZONES CHANGES IN THE TERRITORY OF CZECH REPUBLIC (1O4)
Buček A.
- 14:00–14:15 LANDSCAPE CLASSIFICATIONS OF BELARUS FOR STUDIES OF ENVIRONMENTAL CHANGE (1O8)
Kireyeu V.
- 14:15–14:30 **Discussion**
- 14:30–15:00 **Coffee break**
- 15:00–15:15 THE EFFECT OF DIFFERENT VEGETATION TYPES ON LOCAL CLIMATE (1O3)
Olah A. B.
- 15:15–15:30 CHANGING FUNCTIONS OF THE CZECH RURAL LANDSCAPE: CASE STUDY FROM THE CENTRAL BOHEMIA (1O1)
Lipský Z.
- 15:30–15:45 FOREST COMMUNITIES OF THE RUSSIA'S SOUTHERN FAR EAST IN CONNECTION WITH GLOBAL CLIMATIC CHANGE (1O6)
Urusov V. M.
- 15:45–16:00 POST-INDUSTRIAL LANDSCAPE – IDENTIFICATION AND TYPOLOGY ON LOCAL LEVEL (3P8)
Kolejka J.
- 16:00–16:30 **Discussion**

- 13:00–18:00 PARALLEL SYMPOSIUM No. 2:**
Economy convergence of nature and society under the induced climate pressures and landscape changes
Chairman: Almo Farina
- 13:00–13:20 **Opening keynote lecture:** THE GENERAL THEORY OF RESOURCES (GTR) AS AN EPISTEMOLOGICAL TOOL TO LINK ECOLOGY TO ECONOMICS (2O1)
Farina A.
- 13:20–13:40 **Keynote lecture:** INTEGRATING BIOTOPE AND ECOSYSTEM SERVICE VALUES INTO LANDSCAPE MANAGEMENT (2O2)
Seják J.
- 13:40–14:00 APPROACHES AND COMPROMISES TO THE LANDSCAPE (2O3)
Miklós L.
- 14:00–14:15 OBSERVATION, TERRITORY AND SOCIETY: CONVERGENCE POINTS OF LANDSCAPE ART AND LANDSCAPE ECOLOGY (2O4)
Sánchez Giner M. V.
- 14:15–14:30 CONVERGENCE OF ECOLOGICAL, ECONOMIC AND SOCIAL ASPECTS FACING THE PROBLEMS OF LANDSCAPE AND CLIMATE CHANGE – META-SCIENTIFIC APPROACH (2O6)
Žigrai F.
- 14:30–14:45 **Discussion**
- 14:45–15:00 **Coffee break**
- 15:00–15:15 ECOLOGICALLY VALUABLE LANDSCAPE ELEMENTS – A REGIONAL ANALYSIS IN AUSTRIA (2O12)
Prinz M. A.
- 15:15–15:30 BALANCING BETWEEN NATURE, ECONOMY AND SOCIETY CONFLICTING PRIORITIES: THE PLASTIRAS LAKE LANDSCAPE (2O13)
Hadjibiros K.
- 15:30–15:45 EDUCATIONAL VALUE OF ECOLOGICAL NETWORK IN THE CZECH REPUBLIC (2O7)
Machar I.
- 15:45–16:00 LAND ACQUISITION INSIDE POLISH NATIONAL PARKS – AN OVERVIEW OF THE ENVIRONMENTAL EFFECTS AND PROCESS OPTIMISATION BASED ON THE EXAMPLE OF KAMPINOS NATIONAL PARK, POLAND (2O8)
Michalska-Hejduk D.
- 16:00–16:15 CHANGING SOCIETAL PREFERENCES AND PUBLIC EXPENDITURES FOR ENVIRONMENTAL SERVICES – A CASE STUDY IN EASTERN GERMANY (2O9)
Uthes S.
- 16:15–16:30 **Discussion**
- 16:30–16:45 **Coffee break**
- 16:45–17:00 LANDSCAPE CHANGES DUE TO URBAN SPRAWL IN THE CZECH REPUBLIC (2O10)
Chuman T.

- 17:00–17:15 MORE SUSTAINABLE MUNICIPAL LANDUSE DESIGN (2O11)
Húsenicová J.
- 17:15–17:30 BIOSPHERE RESERVES – AN EFFECTIVE MODEL OF THE COMMON PROPERTY INSTITUTION? (THE CZECH REPUBLIC CASE) (2O5)
Těšitel J.

17:30–18:00 **Discussion**

13:00–18:30 PARALLEL SYMPOSIUM No. 3:

Physical, ecological and socio-economic monitoring for input in scenarios on changing landscapes processes in human-made landscape

Chairmen: Bob Bunce (1st part), Rob Jongman (2nd part):

- 13:00–13:20 **Opening keynote lecture:** PHYSICAL, ECOLOGICAL AND SOCIO-ECONOMIC MONITORING FOR INPUT IN SCENARIOS ON CHANGING LANDSCAPES PROCESSES IN HUMAN-MADE LANDSCAPE (3O1)
Jongman R.H.G.
- 13:20–13:35 LAND USE / LAND COVER CHANGES AND LANDSCAPE FRAGMENTATION IN THE ROMANIAN PLAIN OVER THE 20TH CENTURY (3O8)
Grigorescu I.
- 13:35–13:50 THE INDICATORS OF DESIGNED LANDSCAPES QUALITY AND ITS CHANGES (3O6)
Salašová A.
- 13:50–14:05 HOW WILL RARE SPECIES RESPOND TO MULTI-SCALE ENVIRONMENTAL CHANGES? A TEST WITH ENDEMIC PLANTS OF HIGH CONSERVATION PRIORITY (3O13)
Lomba A.
- 14:05–14:20 LANDSCAPE TYPOLOGY OF THE CZECH REPUBLIC – A SPATIAL FRAMEWORK FOR MONITORING OF ECOLOGICAL CHANGE (3O7)
Romportl D.
- 14:20–14:30 **Discussion**
- 14:30–14:45 **Coffee break**
- 14:45–15:00 REMOTE SENSING OF NATURAL HABITATS IN ISRAEL USING BIOHAB (3O15)
Shkedy Y.
- 15:00–15:15 CLIMATE CHANGE ADAPTATION ACTION PLANS IN EUROPEAN CITIES AND REGIONS: CASE STUDY BRATISLAVA (3O3)
Kozová M.
- 15:15–15:30 **Keyote lecture:** SURVEILLANCE AND MONITORING OF EUROPEAN ANNEX I HABITATS (3O2)
Bunce R.G.H.
- 15:30–15:45 DEVELOPMENT OF SATELLITE IMAGE DATABASE FOR LAND RESOURCE MONITORING (3O4)
Wakamori K.
- 15:45–16:00 MONITORING LANDSCAPE STRUCTURE AND ELEMENTS USING LUCAS FIELD DATABASES VERSUS REMOTE SENSING (3O5)
Mücher C. A.

- 16:00–16:15 **Discussion**
- 16:15–16:30 **Coffee break**
- 16:30–16:45 WHY CULTURAL LANDSCAPES HAVE DIFFERENT VALUES? THINKING ABOUT HERITAGE LANDSCAPE EVALUATION AND MONITORING TOOLS (3O9)
Capelo S.
- 16:45–17:00 VISUAL INTERPRETATION OF KEY PROPERTIES IN VEGETATION STRUCTURE FROM LIDAR DATA – POTENTIAL IMPORTANCE FOR PHYSICAL, ECOLOGICAL AND SOCIO-ECONOMIC MONITORING (3O10)
Skånes H.
- 17:00–17:15 MONITORING LANDSCAPE-LEVEL CHANGE PROCESSES IN VEGETATION COVER (3O11)
Alphan H.
- 17:15–17:30 MONITORING THE CHANGING LANDSCAPES OF THE ANNAPOLIS VALLEY REGION, NOVA SCOTIA, CANADA (3O12)
Colville D.
- 17:30–17:45 75 YEARS OF ECOLOGICAL MONITORING IN BEACH, MIXED AND SPRUCE VIRGIN FORESTS OF EASTERN CARPATHIANS, TRANSCARPATIA, UKRAINE (3O14)
Hrubý Z.
- 17:45–18:00 TOWARDS AN OPEN AND COLLABORATIVE SCIENTIFIC SOCIETY IN EUROPE: WHO OWNS AND WHO MAY USE ECOLOGICAL DATA? (3O16)
Jongman R.H.G.
- 18:00–18:30 **Discussion**
- 13:00–17:00 PARALLEL SYMPOSIUM No. 4:**
Landscape geo-biodiversity and indicators of global ecological change
Chairman: Neil Mitchell
- 13:00–13:20 **Opening keynote lecture:** UNDERSTANDING THE COMPLEXITIES OF SPECIES' RESPONSES IN THE LANDSCAPE TO CHANGING CLIMATES (4O1)
Mitchell N.
- 13:20–13:35 ADAPTIVE MANAGEMENT FOR PROTECTED AREAS UNDER CHANGING ENVIRONMENTAL CONDITIONS TO PRESERVE HABITAT DIVERSITY (4O4)
Neubert M.
- 13:35–13:50 LANDSCAPE MODELLING APPROACH TO ASSESS IMPACTS OF URBANISATION ON ECOLOGICAL CAPACITY IN EUROPEAN REGIONS (4O8)
Zasada I.
- 13:50–14:05 CHANGES IN GEO-BIODIVERSITY AS A LANDSCAPE IMPLICATION OF THE CLIMATE CHANGES IN SØRKAPPLAND, SPITSBERGEN (4O2)
Ziaja W.

- 14:05–14:20 DENDROINDICATION OF LANDSCAPE FUNCTIONING UNDER INFLUENCE OF GEOPHYSICAL AND ANTROPOGENIC FACTORS (4O3)
Diakonov K.
- 14:20–14:35 BIODIVERSITY CHANGES IN MOUNTAIN ECOSYSTEMS WITH ABUNDANT ANT-HILLS OVER DECADES – FROM GRASSLAND TOWARDS FOREST (4O5)
Raabová J.
- 14:35–14:50 **Discussion**
- 14:50–15:15 **Coffee break**
- 15:15–15:30 SPATIAL LEVELS OF LANDSCAPE COMPONENTS INTERRELATIONSHIPS IN BROAD SCALE (4O6)
Merekalova K.
- 15:30–15:45 SPECIES CONSERVATION IN SWEDEN: AN EVALUATION OF THE SWEDISH MODEL (4O7)
Axelsson R.
- 15:45–16:00 CHANGING CLIMATE AND PHENOLOGICAL RESPONSE OF FIVE WILD PLANT SHRUBS IN FLOODPLAIN FOREST ECOSYSTEM IN THE CZECH REPUBLIC DURING 1961–2010 (4O9)
Bartošová L.
- 16:00–16:15 DYNAMICS OF LANDSCAPES OF THE CENTRAL CAUCASUS AS INDICATOR OF MODERN CLIMATIC AND ANTHROPOGENIC CHANGES (4O10)
Petrushina M.
- 16:15–16:30 A GIS-BASED MAPPING AND ESTIMATION THE CURRENT FOREST LANDSCAPE STATE AND DYNAMICS (4O11)
Ryzhkova V. A.
- 16:30–17:00 **Discussion**

SUNDAY, September 5th, 2010

09:00–14:30 PARALLEL SYMPOSIUM No. 5:

Ecological planning, landscape management and green networks in areas of different climate zones

Chairman: Thomas Wrбка

- 09:00–09:20 **Opening keynote lecture:** HOW ECOLOGICAL NETWORK CHANGES IN TIME AND SPACE (5O1)
Konkoly-Gyuró É.
- 09:20–09:35 LANDSCAPE FUNCTIONAL ASSESSMENT BASED ON BOUNDARIES BETWEEN PATCHES WITH DIFFERENT ECOLOGICAL MATURITY (5O2)
Lopez de Pablo C. L.
- 09:35–09:50 LANDSCAPE POLARIZATION AND NODAL REGIONS FOR NATURE & AMP; CULTURE INTEGRATION (5O3)
Veteikis D.
- 09:50–10:05 MULTI-SCALE EFFECT ON LANDSCAPE PATTERN ANALYSIS USING SATELLITE DATA OF VARYING RESOLUTION (5O4)
Zhao Y.
- 10:05–10:15 **Discussion**
- 10:15–10:45 **Coffee break**
- 10:45–11:00 NATURA 2000 SITES AS AN ASSET FOR RURAL DEVELOPMENT – THE GERMAN-CZECH GREEN NETWORK ORE MOUNTAINS PROJECT (5O5)
Bastian O.
- 11:00–11:15 DETECTING GAPS IN THE ECOLOGICAL NETWORK OF CENTRAL EUROPEAN BORDER REGIONS (5O6)
Bianchin S.
- 11:15–11:30 LANDSCAPE ECOLOGICAL PLANNING IN MOSAIC LANDSCAPE (5O7)
Lakovskis P.
- 11:30–11:45 RIVERINE LANDSCAPE CONNECTIVITY – A METHODOLOGICAL APPROACH WITHIN THE ALPINE SPACE PROJECT ECONNECT (5O8)
Bou-Vinals A.
- 11:45–12:00 **Discussion**
- 12:00–13:00 **Lunch**
- 13:00–13:15 IS THERE A CONNECTION BETWEEN LAND USE CHANGES AND GAPS IN ECOLOGICAL NETWORKS? MODEL AREAS OF LOWER DYJE RIVER AREA, BILE KARPATY REGION AND BESKYDY REGION, CZECH REPUBLIC (5O9)
Skokanová H.
- 13:15–13:30 THE FUNCTIONAL ROLE OF SMALL SCALED ECOLOGICAL NETWORKS IN CONSERVATION OF BIODIVERSITY – A CASE STUDY FROM LOWER AUSTRIA (5O10)
Kuttner M.

13:30–13:45 THE USE OF MODERN METHODS OF FIELD DATA COLLECTION FOR STUDY AND MANAGEMENT OF TROPICAL RAINFOREST IN PERUVIAN AMAZONIA (5O11)

Němec P.

13:45–14:00 MONTADOS OF CENTRAL ALENTEJO, PORTUGAL – LINKING ECOLOGICAL FUNCTIONS WITH LANDSCAPE METRICS (5O12)

Batista T.

14:00–14:30 **Discussion**

14:30–15:00 **Coffee break**

09:00–14:30 PARALLEL SYMPOSIUM No. 6:

Forest- and agro-ecosystems: adaptive management approaches

Chairman: Alexander V. Khoroshev

09:00–09:15 LEGACIES FROM PAST MANAGEMENT AND MONITORING OF THE LANDSCAPE MATRIX (6O1)

Eriksson S.

09:15–09:30 DETERMINATION OF APPROPRIATE SPACE SCALE FOR LAND USE DECISIONS BASED ON MULTILEVEL MODELLING OF LANDSCAPE PROCESSES (6O2)

Khoroshev A.

09:30–09:45 SIGNIFICANCE OF ANCIENT FORESTS IN CULTURAL LANDSCAPE (6O3)

Buček A.

09:45–10:00 SCALING UP AGROFORESTRY DEVELOPMENTS: THE IMPORTANCE OF MULTI-LEVEL COLLABORATION FOR ADAPTATION AND HOUSEHOLD PERCEPTIONS (6O4)

Johansson K.

10:00–10:15 **Discussion**

10:15–10:45 **Coffee break**

10:45–11:00 VASCULAR PLANT DISTRIBUTION AS A TOOL FOR ADAPTIVE FOREST MANAGEMENT IN FLOODPLAIN FORESTS IN THE DYJE RIVER BASIN (6O5)

Maděra P.

11:00–11:15 ADDRESSING THE CHALLENGES OF LANDSCAPE MONITORING – THE CZECH TERRA LANDSCAPE INVENTORY (6O6)

Cienciala E.

11:15–11:30 INTEGRATING KNOWLEDGE OF INSTITUTIONS AND LANDSCAPES TO IMPROVE BIODIVERSITY GOVERNANCE IN BELARUSIAN FORESTS (6O7)

Shkaruba A.

11:30–11:45 IMPACT OF LANDSCAPE COMPLEXITY ON WIREWORM ATTACK IN POTATO CROP FIELDS (6O8)

Hermann A.

11:45–12:00 **Discussion**

12:00–13:00 **Lunch**

13:00–13:15 INTEGRATION OF EARTH OBSERVATION DATA AND IN SITU DATA FROM THE NATIONAL INVENTORY OF LANDSCAPES IN SWEDEN (6O9)

Skånes H.

13:15–13:30 THE LANDSCAPE APPROACH AS A TOOL FOR ADAPTIVE MANAGEMENT (6O10)

Axelsson R.

13:30–13:45 COMPARISON OF HIGH FOREST AND COPPICE FOREST GROWTH IN THE TRAINING FOREST ENTERPRISE „MASARYKŮV LES“ KŘTINY, DISTRICT HÁDY (6O11)

Kneifl M.

13:45–14:00 EVALUATION OF TRUNK THINNING FOR MULTIPLE-USE MANAGEMENT AND LONG-TERM MONITORING OF AN OAK FOREST IN NORTHERN ISRAEL (6O12)

Kaplan D.

14:00–14:15 SPATIAL DISTRIBUTION OF MISTLETOE *LORANTHUS EUROPAEUS* JACQ. IN OAK FORESTS (6O13)

Matula R.

14:15–14:30 **Discussion**

14:30–15:00 **Coffee break**

09:00–14:30 PARALLEL SYMPOSIUM No. 7:

Natural and restored landscapes: their functions/services as subjects of problem-oriented science

Chairman: Karel Prach

09:00–09:20 **Opening keynote lecture:** LANDSCAPE ECOLOGY AND RESTORATION ECOLOGY: WHAT HAVE THEY IN COMMON? (7O1)

Prach K.

09:20–09:35 DEVELOPMENT OF INTEGRATIVE LANDSCAPE RESEARCH TOWARDS PROBLEM-ORIENTED SCIENCE (7O2)

Axelsson R.

09:35–09:50 SPONTANEOUS SUCCESSION OR FORESTATION: DIFFERENT MANAGEMENT OF SANDY OLD-FIELDS IN HUNGARY (7O3)

Csecserits A.

- 09:50–10:05 THE EFFECT OF DISTURBANCES ON VEGETATION OF DRY GRASSLANDS (7O4)
Horčíčková E.
- 10:05–10:20 TECHNICAL RECLAMATIONS OF POST-MINING SITES AS SQUANDERING OF DIURNAL BUTTERFLIES AND MOTHS REFUGES (7O5)
Kadlec T.
- 10:20–10:30 **Discussion**
- 10:30–10:45 **Coffee break**
- 10:45–11:00 LANDSCAPE CHANGES OF SE MORAVIA IN THE PERIOD 1836–2006 (7O6)
Demek J.
- 11:00–11:15 MONITORING OF LANDSCAPE CHANGES IN JAPAN USING MODIS DATA: EFFECTIVENESS OF A NEW CONCEPT FOR 'LANDSCAPE TRANSFORMATION SERE (LTS)' (7O7)
Ippei H.
- 11:15–11:30 LIMITATION OF NOW-A-DAYS LAND USE AS A CONSEQUENCE OF THE PAST HUMAN ACTIVITY (7O8)
Ždímal V.
- 11:30–11:45 ASSESSMENT AND PREDICTION OF HISTORICAL AND POSSIBLE FUTURE DEVELOPMENT OF LANDSCAPE STRUCTURES IN DIFFERENT PARTS OF HIGHWAY D1 (7O9)
Keken Z.
- 11:45–12:00 **Discussion**
- 12:00–13:00 **Lunch**
- 13:00–13:15 DESTRUCTIVE EVOLUTION OF POSTMELIORATED LANDSCAPES OF CENTRAL MESCHERA (7O10)
Kharitonova T.
- 13:15–13:30 HYDROLOGICAL-CLIMATIC FUNCTION OF SPONTANEOUS VEGETATION COVER ON ABANDONED MILITARY TRAINING GROUNDS (CZECH REPUBLIC) (7O11)
Engstová B.
- 13:30–13:45 COMPARING POTENTIAL REFORESTATION SCENARIOS OF A TROPICAL FOREST – A LANDSCAPE-SCALE ASSESSMENT OF IMPACTS ON THE AVIFAUNA (7O12)
Schaab G.
- 13:45–14:00 ANALYSING THE EFFECTS OF URBANISATION ON WOODLAND BIRD SPECIES OF IMPORTANT BIRD AREAS IN EUROPE (7O13)
Berges R.
- 14:00–14:15 LOCAL PERSPECTIVES IN LANDSCAPE RESTORATION: TOWARDS MULTIFUNCTIONALITY IN SOUTHERN BORDER OF DRAHANSKÁ HIGHLANDS, SOUTH MORAVIA (7O14)
Trávníček J.
- 14:15–14:30 **Discussion**
- 14:30–15:00 **Coffee break**

13:00–14:00 PARALLEL SYMPOSIUM No. 8:**Open land for food and/or energy production: How to solve interferences with the goals of nature protection?***Chairman: Olaf Bastian*

- 13:00–13:15 ECOSYSTEM SERVICES IN ENERGY CROP PRODUCTION – A CONCEPT FOR REGULATORY MEASURES IN SPATIAL PLANNING? (8O1)
Lupp G.
- 13:15–13:30 BIODIVERSITY COMPATIBLE BIOMASS PRODUCTION: INTERACTIONS WITH LANDSCAPE SERVICES AND STEERING OPTIONS (8O2)
Rode M.
- 13:30–13:45 CULTURAL LANDSCAPES AS PLACES OF REGIONAL ENERGY PRODUCTION (8O3)
Thassler O.
- 13:45–14:00 **Discussion**
- 14:00–14:30 **Coffee break**

09:00–12:00 PARALLEL SYMPOSIUM No. 9:**Adaptations and functional water management by land use change***Chairman: Zdeněk Lipský*

- 09:00–09:15 THE REGIONAL DISTRIBUTION OF LINEAR LANDSCAPE ELEMENTS – IMPACT ON WATER FLUXES AND MULTIFUNCTIONAL LAND USE (9O1)
Meyer B. C.
- 09:15–09:30 METHODOLOGICAL PROPOSAL FOR THE FUNCTIONAL ASSESSMENT OF THE FLUVIAL SYSTEMS (9O2)
Muñoz E. M.
- 09:30–09:45 RELATIONSHIP BETWEEN BIODIVERSITY AND ECOSYSTEM FUNCTION PERFORMANCE IN DIFFERENTLY DISTURBED TERRITORIES (9O3)
Cudlín O.
- 09:45–10:00 MULTIDISCIPLINARY EVALUATION OF IMPACTS OF SPECIAL TERRITORIAL PROTECTION FOR HYDROLOGICAL IMPORTANT AREAS IN THE CZECH REPUBLIC (9O4)
Engstová B.
- 10:00–10:15 **Discussion**
- 10:15–10:30 **Coffee break**
- 10:30–10:45 AGRICULTURAL RISK MODEL FOR WATER SCARCITY (9O5)
Wagner K.
- 10:45–11:00 THE NEW UMBRIA REGIONAL LANDSCAPE PLAN (9O6)
Panella R.
- 11:00–11:15 RIVER LANDSCAPE POTENTIAL FOR CLIMATIC EXTREMES CONTROL (9O7)
Měkotová J.

- 11:15–11:30 HYDROLOGICAL REGIME RECLAIMED AND UNRECLAIMED COLLIERY SPOIL HESPS (9O8)
Cejpek J.
- 11:30–11:45 INTEGRATION OF ECOLOGICAL NICHE FACTOR ANALYSIS AND IFF MEASUREMENTS FOR SUPPORTING CORRECT RESTORATION STRATEGIES IN FLUVIAL HABITATS (9O9)
Carone M. T.
- 11:45–12:00 **Discussion**
- 12:00–13:00 **Lunch**



POSTER SESSION

The poster session is located at the foyer of **building Q**.

Official opening of the poster session will be held on **Friday, September 3rd, 2010 from 17:00 to 18:30**.

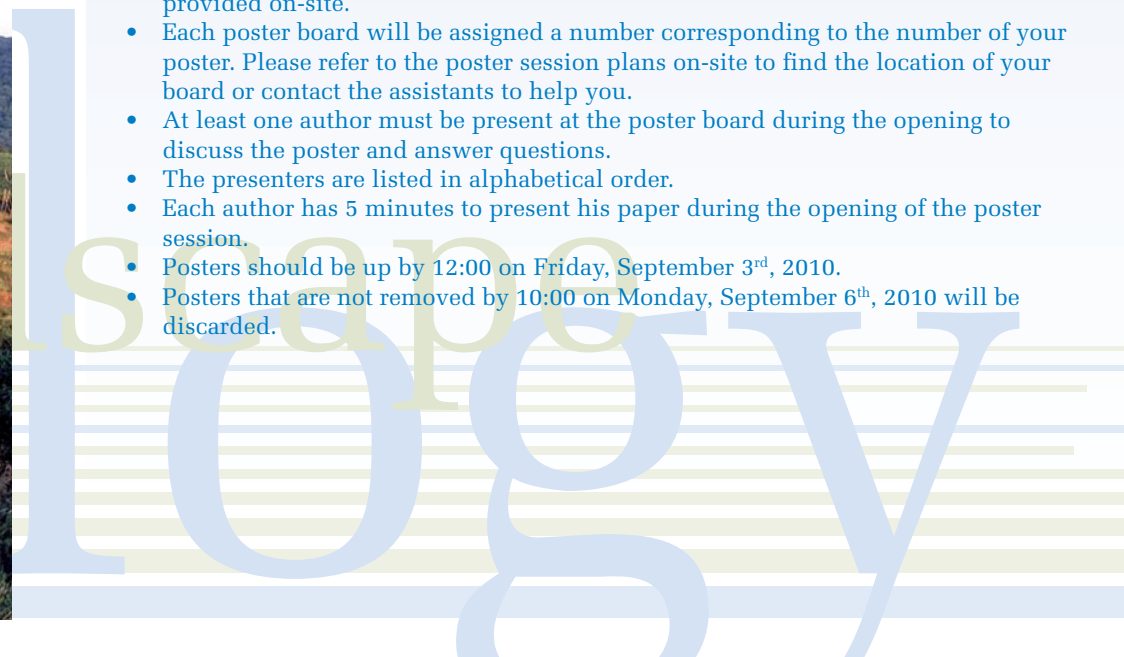
All posters will be on display also on Sunday, September 5th, 2010 from 08:00 to 19:00.

Each delegate has a chance to **vote for the best poster**. Voting paper can be found in your conference bag and will be collected until 12:00 on Sunday, September 5th, 2010. **The official announcement** will be made during the gala dinner on Sunday, September 5th, 2010. Chairman of the poster session, dr. Dušan Romportl of the Faculty of Science, Charles University will announce **authors of three best posters** who will receive a diploma and a present.

The posters are divided into following groups:

- Group No. I: Symposium No. 1, 2 & 9
- Group No. II: Symposium No. 3
- Group No. III: Symposium No. 4 & 5
- Group No. IV: Symposium No. 6
- Group No. V: Symposium No. 7
- Group No. VI: Symposium No. 8

- Poster boards provided are 119 cm high and 84 cm wide.
- A poster can be fixed on the board by hooks or adhesive gum which will be provided on-site.
- Each poster board will be assigned a number corresponding to the number of your poster. Please refer to the poster session plans on-site to find the location of your board or contact the assistants to help you.
- At least one author must be present at the poster board during the opening to discuss the poster and answer questions.
- The presenters are listed in alphabetical order.
- Each author has 5 minutes to present his paper during the opening of the poster session.
- Posters should be up by 12:00 on Friday, September 3rd, 2010.
- Posters that are not removed by 10:00 on Monday, September 6th, 2010 will be discarded.



GROUP No. I.

- 1P1 SUBURBANISATION
Fialová Z.
- 1P2 DETECTING LAND COVER CHANGES IN BIOSPHERE RESERVES WITH REMOTE SENSING AND SOCIAL RESEARCH
Matusch T.
- 1P3 SHORT-TERM, WEATHER-RELATED CHANGES IN LANDSCAPE STRUCTURE AND COMPLEXITY IN GRASSLANDS AND MARSHES
Varga K.
- 2P1 CHANGES OF LANDSCAPE TYPES BETWEEN 1955 AND 2008 IN THE MOTRU- ROVINARI COAL FIELD QUANTIFIED USING MATHEMATICAL MODELING
Cuculici R.
- 2P2 FIRST ITALIAN NATIONAL CENSUS CONCERNING INTEGRATION OF ECOLOGICAL NETWORK CONCEPT INTO TERRITORIAL PLANNING
D'Ambrogi S.
- 9P1 ANALYSIS OF LANDSCAPE EVOLUTION AND SHORELINE CHANGES IN COASTAL AREAS
Carone M. T.
- 9P2 MODELLING HYDROLOGICAL PROCESSES OF WETLAND ECOSYSTEMS AND PROPOSALS FOR WETLAND SUSTAINABILITY: CASE STUDY: ČIERNÁ VODA CATCHMENT
Hlavcová K.

GROUP No. II.

- 3P1 EVOLUTION OF A RURAL TERRITORY THROUGH LANDSCAPE ECOLOGY INVESTIGATIONS: THE RICE FIELDS OF GRUMOLO DELLE ABBADESSE (VICENZA-ITALY).
Barban M.
- 3P2 ANALYSIS OF CITY PARKS ACCESSABILITY IN BRATISLAVA
Baus P.
- 3P3 THE ANALYSIS OF LANDSCAPE DEVELOPMENT BY REMOTELY SENSED DATA EVALUATION IN SURROUNDINGS OF THE NOVE MLYNY WATER RESERVOIRS
Benadová K.
- 3P4 THE INTEGRATION OF HISTORICAL MAPS INTO THE ASSESSMENT OF FOREST COVER DYNAMICS IN THE SOUTH WEST DEVELOPMENT REGION, ROMANIA
Cuculici R.
- 3P5 EVALUATION OF LANDSCAPE STRUCTURE CHANGES USING GIS TOOLS: A CASE STUDY IN SOUTHERN BOHEMIA
Drahoňovská E.
- 3P6 CHANGES IN LANDSCAPE STRUCTURE AND LAND USE HISTORY BASED ON THE HISTORICAL MAPS IN TWO AREAS OF JAPAN
Fujihara M.

- 3P7 USAGE POSSIBILITIES OF SPATIAL-ORIENTED DATABASES FOR LANDSCAPE STRUCTURE EVALUATION
Gdulová K.
- 3P8 POST-INDUSTRIAL LANDSCAPE – IDENTIFICATION AND TYPOLOGY ON LOCAL LEVEL
Kolejka J.
- 3P9 COMPUTER CLASSIFICATION OF GENERAL HABITAT CATEGORIES BY COMBINING LIDAR AND SPOT DATA
Skånes H.
- 3P10 LANDSCAPE-ECOLOGICAL MONITORING OF NATURAL PARK «GORNAYA MSTA»
Nizovtsev V.
- 3P11 ECOTONES AS INDICATORS OF LANDSCAPE CHANGES IN THE TRKMANKA CATCHMENT AREA IN THE LAST 230 YEARS
Pechanec V.
- 3P12 EU IMPACT ON LAND USE DYNAMICS IN ESTONIA
Raet J.
- 3P13 SENSITIVITY OF BROADER HABITATS TO CLIMATE CHANGE IN AUSTRIAN AGRICULTURAL LANDSCAPES
Renetzeder C.
- 3P14 THE REASONS OF LANDSCAPE CHANGES FROM FROM 18TH TILL 21TH CENTURY, CASE STUDY FROM DANUBE LOWLAND
Ružičková J.
- 3P15 GEORADAR MONITORING OF LITHOLOGIC CONDITIONS IN LANDSCAPES
Sysouev V.
- 3P16 THE LANDSCAPE CHANGES IN THE LIGHT OF THE HISTORICAL SOURCES OVER TIME
Trpáková I.

GROUP No. III.

- 4P1 THE ASSESMENT OF MANAGEMENT OF COMMUNAL FORESTS AND COMMUNAL AGRICULTURE LAND BY LOCAL PEOPLE. CASE STUDY; SUDAN
Abbaker F. A.
- 4P2 THE OCCURRENCE AND ABUNDANCE OF LORANTHUS EUROPAEUS L. IN RELATION TO A GLOBAL ECOLOGICAL CHANGE AND ACTIVITIES OF MAN
Kubiček J.
- 4P3 RECORDS OF VASCULAR PLANTS FROM THE CZECH REPUBLIC ON THE WEB
Petřík P.
- 4O5 BIODIVERSITY CHANGES IN MOUNTAIN ECOSYSTEMS WITH ABUNDANT ANT-HILLS OVER DECADES – FROM GRASSLAND TOWARDS FOREST
Raabová J.

- 4P4 DO LANDSCAPE METRICS HELP US TO INTERPRET THE STRUCTURE OF BIRD COMMUNITIES?
Šímová P.
- 4P5 USING HIGH-RESOLUTION SATELLITE IMAGERY TO DETECT POPULATION STRUCTURE OF DOMINANT TREES FOR ADAPTIVE MANAGEMENT APPROACH IN THE ANGKOR MONUMENT, CAMBODIA
Tomita M.
- 5P1 TEACHING ENVIRONMENTAL ASSESSMENT AND MANAGEMENT (EAM) IN THE EU – ANALYSIS OUTCOMES OF MULTIDISCIPLINARY EDUCATION
Belčáková I.
- 5P2 ASSESSMENT OF SECONDARY LANDSCAPE STRUCTURE IN INVESTIGATION AREAS CONDUCTED WITHIN THE INTERNATIONAL PROJECT TRANSNATIONAL ECOLOGICAL NETWORKS IN CENTRAL EUROPE
Eremiášová R.
- 5P3 METHODS OF STUDY ECOLOGICAL NETWORK IN THE CZECH REPUBLIC
Drobilová L.
- 5P4 IMPACT OF ACCURACY ESTIMATION OF THE RAINFALLS TO THE WATER EROSION MODELATION
Grešová L.
- 5P5 LANDCOVER AND BIOTOPES OF THE SOQOTRA ISLAND
Habrová H.
- 5P6 TRADITIONAL METHODS OF LANDSCAPE EXPLOITATION AND THEIR DEVELOPMENT CAUSED BY CHANGES IN SOCIETY
Krivosudský R.
- 5P7 EVALUATION OF LANDSCAPE FUNCTIONALITY – A NEW METHODOLOGICAL APPROACH
Křováková K.
- 5P8 ASSESSMENT OF CHANGES OF RIPARIAN BIOCORRIDOR STOLIČNÝ STREAM FROM THE END OF 19TH CENTURY
Lehotská B.
- 5P9 COMPARISON OF DEVELOPMENT SCENARIOS AND ITS IMPACT ON ECOLOGICAL NETWORK: APPLICATION AT AGRICULTURAL LANDSCAPE UNDER HIGH TATRA MOUNTAINS, SLOVAKIA
Pazurová Z.
- 5P10 LANDSCAPES AND SETTLEMENT DISTRIBUTION IN THE MOUNTAIN REGIONS OF THE CENTRAL CAUCASUS
Petrushina M.
- 5P11 DIVERSITY OF PLANT COMMUNITIES IN URBAN AND SUBURBAN LANDSCAPES OF PETROZAVODSK (NORTH-WEST RUSSIA)
Platonova E.
- 5P12 HABITAT SUITABILITY MODELS AS A TOOL FOR DESIGNING WILDLIFE CORRIDORS
Romportl D.
- 5P13 FOREST PLANNING ON THE BASIS OF MODELLING LANDSCAPE STRUCTURE AND FOREST DYNAMICS
Sysouev V.

- 5P14 PLANNING AN ECOLOGICAL NETWORK OF PANNONIC GRASSLANDS HABITATS IN VOIVODINA (SERBIA)
Szabados K.
- 5P15 NATURAL VEGETATIVE PROPAGATION OF NORWAY SPRUCE (PICEA ABIES /L.KARST./) ABOVE MOUNTAIN TIMBERLINE IN THE HRUBÝ JESENÍK MTS.
Šenfelldr M.
- 5P16 ASSESSMENT OF LANDSCAPE FUNCTIONALITY IN TRANSBOUNDARY REGIONS IN CENTRAL EUROPE
Zmelik K.

GROUP No. IV.

- 6P1 DIFFERENCES AMONG SLOVENE WINE GROWING REGIONS ACCORDING TO MICROCLIMATE FACTORS
Ciglic R.
- 6P2 AGE-DIAMETER RELATIONSHIP OF HUGE SPECIMENS OF PEDUNCULATE OAK (QUERCUS ROBUR L.) AS A TOOL FOR ITS MANAGEMENT
Dreslerová J.
- 6P3 DIVERSITY AND STRUCTURE OF TWO STANDS WITH THE HUNGARIAN OAK (QUERCUS FRAINETTO TEN.): BANAT (ROMANIA) AND PODYJÍ (CZECH REPUBLIC)
Matula R.
- 6P4 ENERGY AND ECONOMIC COMPARISON OF CONVENTIONAL AND ORGANIC FARMING IN UPPER PART OF THE STROPNICE RIVER WATERSHED, CZECH REPUBLIC
Plch R.
- 6P5 MODIFICATION OF THE STRUCTURAL FEATURES OF THE TOP OF TILIA PLATYPHYLLOS SCOP. TREES IN TWO GEOGRAPHICAL REGIONS
Sharovkina M.
- 6P6 EFFECT OF DWARF PINE STANDS ON NORWAY SPRUCE GROWTH IN THE AREA OF MOUNTAIN TIMBERLINE ECOTONE IN THE HRUBÝ JESENÍK MTS.
Šenfelldr M.
- 6P7 ANTROPICALLY CREATED FOREST EDGE IN STAROHORSKÉ VRCHY MTS.
Škodová M.
- 6P8 DIFFERENT APPROACHES TO STUDY DROUGHT STRESS IN FOREST ECOSYSTEMS
Volářík D.

GROUP No. V.

- 7P1 MAPPING OF VEGETATION CLASSES AT THE PAUL VALLEY CATCHMENT SCALE, ZLATNA, ROMANIA
Bodescu F. P.
- 7P2 SPOIL HEAPS OF OSTRAVA-KARVINÁ COAL MINING DISTRICT: SPONTANEOUS SUCCESSION OR RECLAMATION? BOTANICAL REVIEW
Koutecký T.
- 7P3 ECOLOGICAL ASSESSMENT ACCORDING TO EC HABITAT- AND WATER-FRAMEWORK DIRECTIVES: AQUATIC MACROPHYTE VEGETATION, AN ECOLOGICAL QUALITY ELEMENT
Lanz E.
- 7P4 RISK ASSESSMENT FOR VALEA ŞESEI TAILING POND (ROMANIA) AS PART OF THE REHABILITATION PROCESS
Melenti L.
- 7P5 INDICATORS OF RESTORATION MEASURE EFFECTS ON IMPROVING OF ECOSYSTEM SERVICE PROVISION
Plch R.
- 7P6 SPATIAL STRUCTURE EVALUATION FOR ENVIRONMENTAL FACTORS IN THE SAROBETSU PEATLAND, JAPAN
Takada M.
- 7P7 SILVER FIR FORESTS ON ABANDONED PASTURES IN THE LANDSCAPE INFLUENCED BY WALLACHIAN COLONISATION
Volaiř D.

GROUP No. VI.

- 8P1 REED – SUPPLIER OF ENERGY AND PROMOTER OF BIODIVERSITY
Allex B.
- 8P2 DESERTIFICATION OF THE TYPICAL STEPPE LANDSCAPE UNDER FIELD/ STOCK-FARMING MANAGEMENT: AN ASSESSMENT IN WUFUHAO SETTLEMENT, CENTRAL INNER MONGOLIA
Hirabuki Y.
- 8P3 THE ORGANIC FARMING IN ALBANIA - AS AN AGRI-ENVIRONMENT POLICY OPTION
Leksinaj E.
- 8P4 EFFECT OF THE NON-CROP HABITAT SIZE ON THE SPECIES COMPOSITION OF ARTHROPODS – STUDY INTRODUCTION
Olivová V.
- 8P5 ECOSYSTEM SERVICES AS MEANS FOR REDESIGNING THE BIOSPHERE RESERVE NEUSIEDLER SEE
Renetzeder C.

WORKSHOPS**SUNDAY, September 5th, 2010****15:00–17:00****WORKSHOP No. 1:****How to make impact assessments which incorporate spatial pattern of ecosystems and landscapes?**Open for *in situ* confirmation.**WORKSHOP No. 2:****Planning and design of ecosystem networks and cultural landscape in the increased dynamics of climate change?**

Chairman: Antonín Buček

Thirty years experiences of territorial systems of ecological landscape stability planning and twenty years experiences of new biocentres and biocorridors creation in the Czech republic.

The territorial system of ecological landscape stability consists of mutually integrated complex of natural, and modified but near natural ecosystems which maintain a natural stability. It is made up of ecologically significant landscape segments, efficiently located on the basis of functional and spatial criteria. It is thus an optimally functioning system of biocentres, biocorridors and interaction elements.

There are only a few regions where the existing system of ecologically significant landscape segments functions as an efficiently connected territorial system in the Czech Republic. For these reasons a team of Czech and Slovak scientists and planners came up in eighties of the last century with an approach to the design of territorial systems of ecological landscape stability. The head of the team was Jiří Löw, a landscape planner from Brno.

The five basic criteria listed below are used in the design of the systems:

- the diversity of potential natural ecosystems,
- the spatial relationship of biota in the landscape,
- spatial parameters,
- the present state of the landscape,
- socioeconomical limits and intentions.

The most difficult and at the same time the most important task was to set spatial parameters. Using all the available scientific knowledge, the experts on the thirty member team arrived in the end at a compromise solution in the search for the minimum spatial parameters necessary for the functioning of the biocentres and biocorridors. The parameters (area, length and width) differ obviously according to the level of significance of the territorial system. The area required is the smallest in local systems and increases on moving from regional to supra regional.

Projects for local, regional and supra-regional territorial systems of ecological stability are gradually being processed all over the Czech Republic. These projects will become an integral part of territorial plans, agricultural land-use plans and forest management plans. One of the most demanding tasks is the gradual addition of the missing biocenters and biocorridors.

There are hundreds of new created local biocentres and biocorridors in the Czech republic, situated mainly in agricultural landscape. 62 local biocentres with total area 256 ha and 38 biocorridors with total lengths 39km were created on the territory of South Moravian region in period 1997-2007. It will take long time, certainly several decades, before the skeleton of ecological stability is successfully completed so that the territorial systems of ecological stability function as a living ecological network providing good conditions for the existence of natural communities in the cultural landscape.



FIELD TRIPS

FIELD TRIP No. 1:

Changes in landscape in the surrounding of the Nove Mlyny Reservoirs

SATURDAY, September 4th, 2010

Departure: 08:30, expected arrival: 17:30

Guides:

Antonín Buček, Mendel University in Brno

Miroslav Šebela, The Moravian Museum, Brno

Extensive water engineering schemes were implemented in the alluvial plain of the Dyje River in southern Moravia in 1969–1989, including a set of three reservoirs covering an area of 3,200 hectares (ha). As the reservoirs were filled, the well-balanced landscape with a typical mosaic of wetland, grassland and forest biocenoses disappeared under water. The initial state of the landscape and its gradual changes are documented in a number of detailed studies and forecasts. As a result, the landscape with the Nové Mlýny reservoirs represents a unique landscape ecology experiment. A segment of the floodplain landscape, located at the site called Betlém, was successfully regenerated by the process of controlled primary succession.

The sites to be visited during the excursion:

(1) Dam of the Lower Reservoir – alluvial plain transformed by a technocratic decision

The Nové Mlýny scheme on the Dyje River consists of a set of three reservoirs:

- the Lower Reservoir (area of 1668 ha, total capacity 83,961,000 sq. metres, completed in 1989)
- the Middle Reservoir (area of 1033 ha, total capacity 32,062,000 sq. metres, completed in 1981)
- the Upper Reservoir (area of 1033 ha, total capacity 83,961,000 sq. metres, completed in 1989)

(2) Křivé jezero National Nature Reserve – a relic of traditional floodplain landscape

We will see a complex of alluvial forests and floodplain meadows with stumpy willows, and wetlands extending over an area of 106.4 hectares.

(3) Děvín National Nature Reserve – a landscape panorama seen from the Dívčí hrad

We will walk from Pavlov up the southern limestone slope to the ruin of Dívčí hrad (Maiden Castle), 428 m a.s.l. and then descend down the northern slope, passing through natural Pannonian habitats, including, for example rupicolous Pannonic grasslands, Sub-Pannonic steppe grasslands, Pannonian white-oak woods, Pannonic oak-hornbeam forests, Tilio-Acerion forests of screes and ravines.

(4) Dam of the Middle Reservoir – issue of water level fluctuation in the reservoirs

With its numerous islands, the Middle Reservoir has become an important nesting area,

migration stopover and wintering ground for birds. The water level height in the reservoirs is of crucial importance for the restoration of the floodplain biotopes. With the design water level at 170.35 m a.s.l., the dry land area is only 23 hectares. As a compromise, it was proposed on the basis of the results of landscape ecology studies, to reduce the water level to 169.50 m a.s.l. This would enlarge the dry land area to 103 ha.

(5) Betlém – natural regeneration of floodplain biotopes

This former sand pit located north of the dam of the Middle Reservoir became an important research site of the Moravian Museum. The processes of natural restoration of aquatic, wetland and forest biotopes have been systematically studied there since 1980. The site is an important refuge for amphibians. All the indigenous species of a floodplain landscape occur there.

FIELD TRIP No. 2:

Newly created segments of ecological networks in the agricultural landscape of Moravia (Terrestrial Systems of Ecological Stability – TSES)

SATURDAY, September 4th, 2010

Departure: 08:30, expected arrival: 18:30

Guides:

Boleslav Jelínek, Mendel University in Brno

Josef Glos, Ageris, s.r.o., Brno

Excursion timetable

09:15–10:00	TSES at Vícemilice – local biocentre ‘Dlouhé čtvrti’
11:00–12:00	TSES at Vracov – local bio corridor
12:30–14:00	lunch at Vracov
15:00–15:45	TSES at Podolí – successive formation of a comprehensive network If enough time is left: TSES at Ponětovice – local biocentre
16:00–17:00	TSES at Sovice – local biocentre
17:00–18:00	costumed procession at Sovice

TSES at Vícemilice – ‘Dlouhé čtvrti’ local biocentre

Project design documentation for the establishment of the local biocentre was commissioned in 1996 and was completed in 1997. In the first stage the slope was grassed and a grass/herb mixture was maintained (1997–1998). The area was mown on a regular basis during the next three years.

An amount of CZK 1,500,000 was made available from the Landscape Care Programme in 2000 to plant woody species in the established sod. The site was fenced (it consists of two separate areas, one larger, the other, located west of the road, is much smaller). Although the planting process did not exactly follow the design (the spatial distribution of the different shrub and tree species differed slightly from the design and birch seeds were not sown by broadcasting in one of the subplots, as the design required) but the work was done well and the forest nursery plants were of good standard quality. The grass among the plants was mown regularly on the basis of a 5-year contract.

Thereafter the area was left unattended.

Current state – although a relatively long period has elapsed since the implementation of the project, the woody species have not yet developed a canopy and tend to stunt in growth. This is ascribed three reasons:

1. Owing to its shape and aspect, the entire slope provides very poor conditions for the growth of shrubs and trees. Due to high temperatures the soil dries quickly and the lack of water slows down growth.
2. The fence failed to keep deer off the areas. The animals bite off the terminal buds and prevent the plants from growing.
3. Oak disappeared totally from the species spectrum in the area (primarily due to deer, lack of water, and oak's poorer resistance to these adverse conditions, compared to linden, ash and birch). As a result, the density of the stand is decreasing, the branches spread out and the trees fail to grow in height.

TSES at Vracov – local biocorridor

The local Vracov biocorridor occurs in southern Moravia, district Hodonín, cadastral area Vracov. It is situated perpendicular to the main road Kyjov - Veselí nad Moravou, about 2 km NW of Vracov. It was established in 1991. Since the time, its tree component is monitored. The total length is 1930 m and width 15 m. It was established in an area free of original vegetation on arable land. Its target community should be of the forest environment character. In the biocorridor, 4 permanent research plots (PRP) were laid out, each of them being 50 m long and 16 m wide. In each PRP, there are 8 rows of trees of a mean distance of 2 m; row spacing is 1–1.6 m depending on the tree species. From climatic aspects, the biocorridor is situated in a warm region T4, which is the warmest region within the CR. Weather is markedly warm, moderately to slightly humid (mean annual temperature at the Kyjov and Bzenec stations is 9.2°C and 9.0°C, respectively). Mean annual precipitation is 569 mm/year. Higher humidity is given by the vicinity of the windward slope of the Carpathians. The length of the growing season fluctuates about 165 days per year. Altitude: 196–215 m. Soil type: arenaceous chernozem on non-calcareous aeolian sands.

TSES at Podolí – successive formation of a comprehensive network

The village Podolí is building a TSES in its territory on a systematic basis, both at the transregional level and local level. The TSES, incorporated in the village's development plan, was prepared as design documentation for the planning procedure.

Transregional biocorridor axis K 132 (partly completed already) passes through the north-eastern part of the territory of the village, spanning, for the most part, compact bands of arable land adjoining the cadastral areas of the neighbouring villages, Velatice and Horákov. The biocorridor consists of three sections, which have been built since the end of the 1990s. A part of the corridor and two bio centres still remain to be completed. The plan for the local TSES to be built in the territory of Podolí includes two local level branches: hydrophile and mesophile. The hydrophile branch uses the flood plain and stream of the Říčka. This branch consists of bio corridor BK5 and the biocentres BC5 ‘Pindulka’ and BC6 ‘U Zukalova Mlýna’. The missing bio centre, Pindulka, is currently being built with financial support from the EU. For the mesophile branch, the bio corridor is to be completed and the local bio centre 4 has to be built.

What can be seen: Two stages of building a transregional biocorridor – plants in a fenced area: one part with grown-up plants, the other not yet secure; Process of building LBC5 Pindulka, including project design documentation, and the problems accompanying the implementation process. Comments to be given by a member of the community's Environmental Commission (an ornithologist)

TSES at Ponětovice – local bio centre

The Ponětovice bio centre was built in 2001 (with Landscape Care Programme funding) as a floodplain bio centre, located in the cadastral area of Ponětovice, outside the area initially proposed in the TSES Master Plan. The new location, meeting the spatial and bio-geographical requirements of the TSES branch along the Rokytnice River, required an adjustment of the TSES branch running along the Říčka stream. Three pools of different sizes, fed with groundwater, have been built in the bio centre. Two of them are too small to be stocked with fish and are therefore suitable for amphibians. The earth dug to form the depression for the pool was used to make a berm lining the south-eastern end of the plain – it is planted to a mixture of woody species corresponding to a site with normal hydric conditions. The berm is an unnatural feature in the floodplain landscape.

TSES at Sivice – local biocentre

The TSES Master Plan and the development plan of the village of Sivice include a floodplain bio centre on the Tvaroženský potok stream 3 hectares in size. To build it, the village community cooperated with the agricultural water management authorities, using the Landscape Care Programme funds. A water reservoir (pond) was built, woody species were planted and the plot was grassed.

When the pond was built it began to be used by anglers and had a minimum value for the reproduction of amphibians. The permanent grassland was invaded by weeds and required permanent care. Additional groups of trees and shrubs were therefore planted in 2004 in a part of the site, and a small pool (with a lowered edge to prevent access for anglers) was formed in the waterlogged part of the site. The good-quality wetland plant stands near the pool had to be left in place according to the project design but in reality they were covered by the earth dug from the pool.

The village Mayor will be present. At 17:00, maypole felling will take place in the village, followed by a costumed procession.

FIELD TRIP No. 3:

Lower Morava Biosphere Reserve

MONDAY, September 5th, 2010

Departure: 08:30, expected arrival: 19:00

Guides:

Jan Vybíral & Petr Čupa, Lower Morava Biosphere Reserve

Marek Štěpán, Lower Morava Biosphere Reserve fellow expert, landscape architect

Excursion timetable:

9:30	Lednice – introduction to the Lower Morava BR <ul style="list-style-type: none"> walk through the chateaux park with discussion about contemporary historical landscape management of World heritage landscape
11:30	departure to Poštorná
12:15–13:00	stop at Františkův rybník Nature reserve - example of private management of nature reserve
13:00–14:30	lunch at Celnice restaurant in Břeclav-Poštorná
15:00	departure to Soutok area
15:30–18:00	Soutok area – a tour through the largest floodplain forest of the CZ <ul style="list-style-type: none"> examples of BR projects: elimination of environmental burdens, soft tourism strategies, sustainable forest management
18:00	departure to Brno

Recommendations:

Although no difficult hikes are planned, comfortable sport/walking shoes are recommended. The tour will take part in floodplain area, therefore mosquito repellent may become handy. The weather in September is usually very pleasant, but occasional rain showers may occur.

Ecological characteristics:

Major ecosystem: Temperate broad-leaf forests, Pannonian steppes

Elevation: 148–548 meters above sea level

Climate: warm region

Average annual temperature: 9,5°C

Average annual precipitation: 500 mm

The biosphere reserve is located in the region, that has been formed by human activity for centuries and every remnant of the original habitat is precious. The biosphere reserve consist of unique combination of limestone cliffs of the Palava Hills, the rare Central European lowland floodplains along the lower reaches of the Kyjovka, Dyje and Morava rivers covered by hard-wood alluvial forests and continental flood-plain meadows (some 8 000 ha) and the largest European man made landscape - Lednice-Valtice Cultural Landscape. Amongst other various types of habitat within the BR you can find karst, dry grassland, oak-hornbeam forests, thermophilous oak forests, scree forests, hard-wood and soft-wood flood-plain forests, flood plain meadows and psammophilous vegetation, oak forests and scots pine plantations, fishponds and other standing water habitats, saline

meadows, marshlands, vineyards and other mostly intensively farmed agricultural land. BR is an important bird nesting area and migration stop.

Declaration date: July 8, 2003

Surface area: 354 km²

BR administration: public benefit company – the only Czech BR managed by an NGO

Human activities: Agriculture, Wine production, Fish-farming, Forestry, Small scale industry and services, Tourism & recreation

Protection classifications: Natura 2000 (3 Special Protection Areas for birds and 17 Special Areas of Conservation), Pálava Protected Landscape Area, 6 National Nature Reserves, 8 Nature Reserves, 3 National Nature Monuments, 7 Nature Monuments, 2 Nature Parks, 2 Ramsar sites, Lednice-Valtice Cultural Landscape World Heritage Site.

FIELD TRIP No. 4:

Model projects of sustainable regional development in Hostětín and Tvarožná Lhota (by footprints of Prince Charles)

MONDAY, September 5th, 2010

Departure: 08:30, expected arrival: 19:00

Guides:

Jana Tesařová & Radim Machů, Centrum Veronica Hostětín

Vít Hrdoušek, Tvarožná Lhota

Excursion timetable:

10.00	Arrival at Tvarožná Lhota (Silver Plaque winner in the 2008 Entente Floral Europe competition) – Museum of the Service Tree: brief information about the service tree <i>Sorbus domestica</i> and rare fruit trees in the landscape and about the use of the fruits. A toast.
10.45	Biocorridors behind the cemetery – establishment and development of the features of the TSES [terrestrial systems of ecological stability TSES] in the landscape. TSES map.
11.30	Biocorridor toward the lookout tower, viewing service trees, Cornerlian cherry trees, the Vojšice orchid meadows, explanation of their development
12.15	Travičná Cottage – environmental premises, restoration of pasture farming, gene fund orchard, an example of landscape revitalising, refreshment (cheese, honey wine)
13.00	Departure to Hostětín
13.45	Lunch at Hostětín
14.30	Environmental projects in the village: reed-bed sewage treatment plant, biomass-fired heating plant, cider-making plant, a passive house – Veronica Centre, environmentally friendly public lighting system, solar power plant.
17:00	Departure to Brno

Pedestrian distances are up to 100 metres from the bus.

Tvarožná Lhota village is a good example of municipality with a sustainable approach to environment. The village is famous for a Service tree (*Sorbus domestica*) planting. This very rare, giant in size traditional fruit tree bears fruit with medicinal effects. There is a museum dedicated to the Service tree in the centre of the village, surrounded by a nature trail of Service tree. Fully functional 40 years old biological corridor can be found close to the village. Prince Charles traveled the same trace during his visit in the Czech Republic in spring 2010.

The municipality of **Hostětín** with 240 inhabitants lies in the northern part of the Protected Landscape Area of Bílé Karpaty /the White Carpathians/ (it has been a UNESCO biosphere reserve since 1996). Hostětín is a successful example of a gradual fulfilling of the principles of sustainable development of the countryside. Numerous environmental projects have been undertaken within the municipality since the beginning of the nineties of the 20th century. There has been a root waste water treatment plant, and a fruit pressing plant built as well as solar systems, a bio-fuel heating plant, economical street lighting, and a conference centre – the passive house. The projects are results of co-operation between local residents and regional or foreign partners. A complex analysis of the model projects proved that every single project fulfils sufficiently all three pillars of the sustainable development concept – economic, social, and environmental (for example annual reductions of carbon dioxide emissions are more than 1,600 tons). The field trip will introduce all model projects in Hostětín as well as their influence over the landscape and the environment.



POST-CONFERENCE EXCURSIONS

EXCURSION No. 1:

The Bohemian Karst Protected Landscape Area and Karlštejn Castle

TUESDAY, September 7th, 2010

Departure: 07:30, expected arrival to PRAGUE: 19:00

Guides:

Tomáš Chuman, Charles University in Prague

Tomáš Tichý, The Bohemian Karst PLA

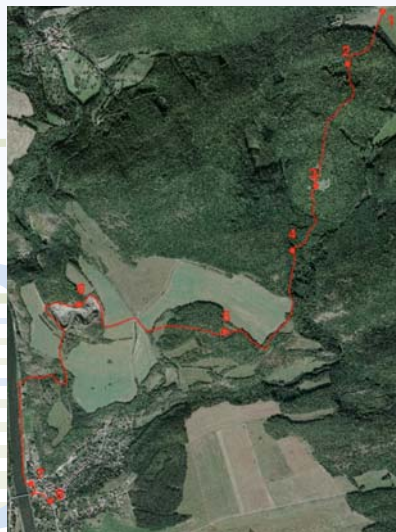
This excursion will show you one of the most beautiful protected landscape area, that is unique not only within the Czech Republic but also within Europe, and you will end the trip by visiting gothic castle built as a place for safekeeping the royal treasures (collection of holy relics and the coronation jewels of the Roman Empire).

Part 1: Field trip through The Bohemian Karst PLA

Excursion will lead through forests, forest steppes and man-made landscape of pastures and abandoned limestone quarries in different stages of vegetation succession. Main habitats will be presented and their threats will be discussed as well as various threats and conflicts to nature conservation sites will be presented: abandonment of traditional management (grazing, coppicing), planting of non-native trees, limestone mining, nitrification of poor rock vegetation from nitrogen emissions, construction of railway corridor, construction of river navigation, anti-floods measures, housing construction. Horizontal distance will be approximately 5.6km (vertically 220 m). Two parts are relatively hilly.

Schedule:

- start of the field excursion – POINT 1 (approx. 11 a.m.)
- beech forests – POINT 2
- Doutnáč Hill: forest steppes – POINT 3
- formerly coppiced oak-hornbeam forests – POINT 4
- dry grasslands and grazing – POINT 5
- Chlum Quarry: natural succession in the limestone quarries – POINT 6
- Srbsko: recollection on the floods in 2002 – POINT 7
- departure – POINT 8 (approx. 15:30 p.m.)



Map showing the track and stops.

Following Natura 2000 habitats will be shown:

- 3270 Rivers with muddy banks with *Chenopodium rubri* p.p. and *Bidention* p.p. vegetation
- 6110 Rupicolous calcareous or basophilic grasslands of the *Alyso-Sedion albi*
- 6190 Rupicolous pannonic grasslands (*Stipo-Festucetalia pallentis*)
- 6210 Semi-natural dry grasslands and scrubland facies on calcareous substrates (*Festuco Brometalia*)
- 9150 Medio-European limestone beech forests of the *Cephalanthero-Fagion*
- 9170 *Galio-Carpinetum* oak-hornbeam forests
- 91H0 Pannonian woods with *Quercus pubescens*

Part 2: Visit of the Karlštejn Castle

Tour includes historical interiors of the Imperial palace and the lower floors of the Marian tower with valuable equipment of 14th to 19th centuries (Courtier's Hall, Hall of Knights with chapel of St. Nicolas, Chapter Deanery, Royal Bedroom, Audience and Banquet Halls, Hall of Ancestors, Treasury and Jewels Hall, former castle prison). The tour will start at 16:40 and last approx. 50 min.

Please note: This excursion will start in Brno at 7:30 a.m. and finish in Prague around 7:00 p.m. Participants will be provided with packed lunch. There will not be any opportunity to buy food or beverages until late afternoon. Substantial part of the excursion will be in the field; therefore hiking shoes are necessary.

EXCURSION No. 2:

Průhonice park – UNESCO protected area & suburban zone of Prague

TUESDAY, September 7th, 2010

Departure: 08:00, expected arrival to PRAGUE: 17:00

Guides:

Dušan Romportl, The Silva Tarouca Research Institute for landscape and Ornamental Gardening & Charles University in Prague

Petra Puldová, Charles University in Prague

Markéta Šantrůčková, The Silva Tarouca Research Institute for Landscape and Ornamental Gardening, Průhonice

Excursion timetable:

- 08:00–10:30 Transfer by bus from Brno to Průhonice (close to Prague), across the scenic region of Bohemian-Moravian Highlands
- 10:30–12:30 Guided tour through Průhonice park (UNESCO protected area) with dr. Markéta Šantrůčková, focusing on historical landscaping
- 12:30–14:00 Lunch at the Restaurant & Brewery U Bezoušků in Průhonice
- 14:00–16:00 Tour by bus with some short walks and stops for discussion through suburban areas in southern outskirts of Prague – Zdiměřice, Jesenice and Dolní Břežany. Guided by Petra Puldová from URLAB at Charles University
- 16:00–16:45 Transfer by bus to the Prague city center, possibility to get off at the Prague Airport or at the main railway station

The park of Průhonice – UNESCO protected area belongs to the most beautiful spots in the outskirts of Prague. Park was founded in 1885 by Count Arnošt Emanuel Silva-Tarouca, a Portuguese amateur botanist, who transformed monotonous agricultural landscape into supreme example of ornamental landscaping. Today, several thousand varieties of trees and bushes grow there, including a vast collection of rhododendrons. It is tastefully laid out over some 250 hectares, with pathways, creeks, bridges, several ponds and an alpinum. Whole area of the park is also important sanctuary for several animal species, since majority of Prague surroundings is under big pressure of the process of urban sprawl.

On the second part of the excursion you could see some examples of the impact of suburbanization on landscape character and local communities in the municipalities of Jesenice and Dolní Břežany. The worst and the best practices will be introduced by experienced professionals in social geography and landscape ecology. There will be possibility to visit Prague individually in the late afternoon.



SOCIAL EVENTS

BRNO BY BUS EXCURSION

FRIDAY, September 3rd, 2010

Departure: 14:00, expected arrival: 18:00

Enter the past, listen to old legends and at the same time sense the pulse of modern European metropolis. Historic center of Brno can be rightfully proud of number of its historic sights especially religious ones. See the church of Saint Thomas with painting of black Madonna that emperor Charles the 4th donated during the dedication, Basilica of Ascension of Virgin Mary, Augustian Monastery – jewel of Moravian Gothic architecture, where father of genetics science Jan Gregor Mendel served as abbot, the Cathedral of St. Peter and Paul, St. Thomas Church, Dietrichstein Palace and many others. Our last stop will be Spilberk Castle that used to serve as a fortress with an infamous prison and from where there is a beautiful view of Brno's panorama.

The tour includes an English speaking tour guide, air-conditioned bus, no entrance fees.

GALA DINNER IN WINE CELLAR

SUNDAY, September 5th, 2010

Departure: 19:00, expected arrival 22-23:00

Cultural and culinary experience of the South Moravian region.

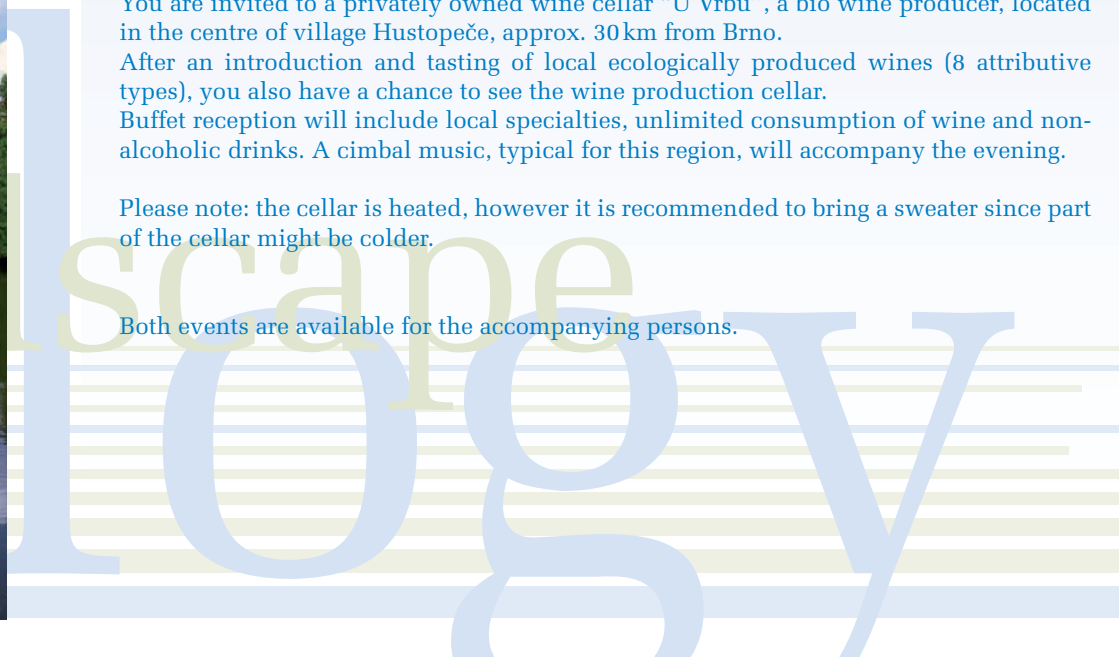
You are invited to a privately owned wine cellar “U Vrbů”, a bio wine producer, located in the centre of village Hustopeče, approx. 30km from Brno.

After an introduction and tasting of local ecologically produced wines (8 attributive types), you also have a chance to see the wine production cellar.

Buffet reception will include local specialties, unlimited consumption of wine and non-alcoholic drinks. A cimbal music, typical for this region, will accompany the evening.

Please note: the cellar is heated, however it is recommended to bring a sweater since part of the cellar might be colder.

Both events are available for the accompanying persons.



INSTRUCTIONS FOR SPEAKERS

Speaker's Ready room is located on the ground floor of building Q, in a room called Informační centrum (Information centre).

Opening hours are as follows:

Thursday, September 2nd, 2010	16:00–19:00
Friday, September 3rd, 2010	08:00–19:00
Sunday, September 5th, 2010	08:00–15:00

Each speaker has up to 15 minutes for oral presentation.

All authors also have a chance to present their article for publication in the **Journal of Landscape Ecology**. Papers will be collected at the stand of the Journal located in the foyer of building Q until 18:00 on Sunday, September 5th, 2010.

REGISTRATION

Registration desk is located at the foyer of **building Q**.

Opening hours:

Thursday, September 2nd, 2010	16:00–19:00
Friday, September 3rd, 2010	08:00–19:00
Sunday, September 5th, 2010	08:00–17:00

ONSITE REGISTRATION FEES

IALE Member	230 €
Non-member	280 €
Student	70 €
Accompanying person	50 €
Gala dinner *	30 €
Field trip *	80 €
Post-excursion *	90 €

**number of seats is limited, therefore please consult the registration personnel for availability*

Registration fee includes:

- Admission to plenary session & parallel symposia
- Admission to the poster area
- Conference materials
- Book of abstracts
- Refreshments during the conference (coffee breaks, lunch)

Registration fee does NOT include:

- Gala dinner
- Participation on field trips and post-conference excursions

Accompanying person fee includes:

- Gala dinner
- Guided excursion Brno by bus

Field trip / post-excursion fee includes:

- Transportation
- English speaking guide
- Lunch

GENERAL INFORMATION

AIRPORT

Prague Ruzyně international airport handles flights of most European carriers and also some overseas flights. It is located 30-45 minutes by car from the centre of Prague and 2 hours driving from Brno.

Brno Tuřany international airport is located within the town territory, next to the D1 Brno-Olomouc motorway. Direct bus No. 76 departs accurately every 30 minutes from the Brno Main train station and continues directly to the terminus at the Airport Brno. The travel time from the centre to the airport is about 20 minutes.

BADGE

All registered participants are requested to wear their name badges at all times. Only delegates wearing their name badges will be admitted to the conference venue.

COFFEE BREAKS

Between the sessions, coffee breaks will be served to all delegates wearing their name badges.

CURRENCY

The Czech crown (CZK, Kč) is the official currency of the Czech Republic. Exchange of foreign currency is available at the airport, most hotels, banks and exchange offices. International credit cards are accepted for payments in hotels, restaurants and shops. Payment in cash in EUR is also available in some restaurants and shops, please ask for details on-site. ATM machine can be found near the main entrance to building B of Mendel University.

ELECTRICITY

The Czech Republic uses a 220 volt 50 Hz system, sockets have the European standard and plugs are three-prong grounded.

HOTEL ACCOUNTS

All participants are reminded to settle their hotel bills for extras prior to departure with a hotel reception.

IMPORTANT TELEPHONE NUMBERS

150: Fire
155: Ambulance
156: Prague Police
158: Police
112: General Emergency for Europe
Conference hotline: +420 606 615 031

INSURANCE

By registering for the Conference, participants agree that neither the Organising Committee nor the Conference Secretariat assume any liability whatsoever. The organizers will not be responsible for the loss or damage of personal belongings.

INTERNET

The possibility to access internet at the venue is only through Eduroam which is available for academicians of universities with a certificate which grants permission to use any wireless network connected into Eduroam.

LANGUAGE

The official language of the Conference is English. Simultaneous interpretation will not be provided.

LUNCH

Lunch will be served in building O on Friday and Sunday between 12:00 – 13:00. During field trips and post-conference excursions, lunch will be served in local restaurants. A selection of menu is available. Participants of excursion No. 1 (Bohemian Karst) will receive packed lunch.

MOBILE PHONES

Participants are kindly requested to keep their mobile phones in the off position in the meeting rooms while sessions are being held.

ONLINE BOOK OF ABSTRACT

The abstracts presented during the conference are also available in electronic version on the official website of the conference www.iale.cz/icle2010 for download.

PARKING

It is not allowed to park at the university premises, therefore we recommend to park on the street in front of buildings A and B.

PUBLIC TRANSPORTATION

Tram stop is located on the side of building B. Tram No. 9 takes you to the railway station and No. 11 to the city centre. For one journey you need the 2-zones ticket valid for up to 60 minutes. The price is 22 CZK (0,9 EUR).

SHOPPING

Most shops in Brno are open from 8:00 to 18:00 Monday through Friday and from 8:00 to 12:00 on Saturday. Bigger shopping centres and supermarkets in the city centre or in the suburbs are open from 8:00 to 20:00 Monday through Sunday.

SMOKING POLICY

For the comfort and health of all participants, smoking is not permitted at any official function.

STAFF

If you have any questions, please contact members of the conference staff who can be easily recognized by green T-shirts with Mendel University logo.

TAXI SERVICE

In the city centre, taxis can be hailed from the street but we strongly recommend to use hotel taxis or to call taxi by phone through the radio taxi service.

Taxi Mobile 800: +420 800 33 33 68, AB Radio Taxi: + 420 545 224 522

TIME ZONE

The Czech Republic is on Central European Time - Greenwich Mean Time (GMT) plus 1 hour. From April to October is summer time, i.e. GMT + 2 hours.

TIPPING

Service is usually included in the bill in bars and restaurants but tips are welcome. If you consider the service good enough to warrant a tip, we suggest about ten percent.

TOURS

All tours (incl. field trips and gala dinner) will depart and arrive back to the Mendel University. The departure point is by the main entrance to building A.

Post-conference excursions will end in the centre of Prague or at the airport if requested.



3-6th SEPTEMBER, 2010

International Conference in Landscape Ecology

BRNO / PRAGUE, CZECH REPUBLIC

